



PLACER COLOR

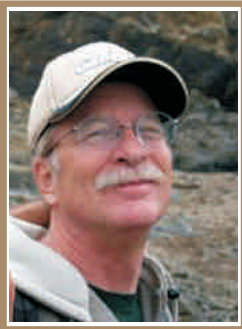
THE NEWSLETTER THAT FOCUSES ON PHOTOGRAPHY IN THE FOOTHILLS

Volume 50 Number 4 PO Box 4990, Auburn, CA. 95603 April 2012 est.1952

The Placer Camera Club meets the third Tuesday of each month except August in the Beecher Room of the Auburn Placer County Library, 350 Nevada Street, Auburn, CA. Visitors are always welcome.

An informal gathering at 6:30 PM is followed by the meeting which starts promptly at 7PM.

The President's Corner



This month we have Image Evaluations. Our judge will be **Keith Sutter**. Keith is a local commercial photographer. His website is: <http://www.sutterphoto.com/Welcome.html> Send your entries to placercameraclub@gmail.com Don't miss this one!

In **May** we have Image Evaluations.

Our judge will be longtime Auburn Journal photographer **Ben Furtado**. He has recently opened up a photography studio in Auburn. His Website is:

<http://www.furtagraphy.com/> Let's see those Photo Journalism entries!

May is time to turn in your entries for our **Annual Competition**. Entries will be judged outside the club meeting by a judge to be announced. There will be ribbons awarded for 1st, 2nd & 3rd place in each category, plus image of the year. Entries must have been entered during the past year (Nov 2011 – May 2012) in our Image Evaluations. Images submitted for Theme Nights are not eligible. Liz Statts will be sending out a list of what you have entered during the year. I should have your entries since you submitted them during the club year so all I need is the image title, category and month it was entered. Entries must be submitted by June 1st. I will email more information on entry procedure in early May.

See you April 17th!
Mike Schumacher
President Placer Camera Club



Calendar of Upcoming Events

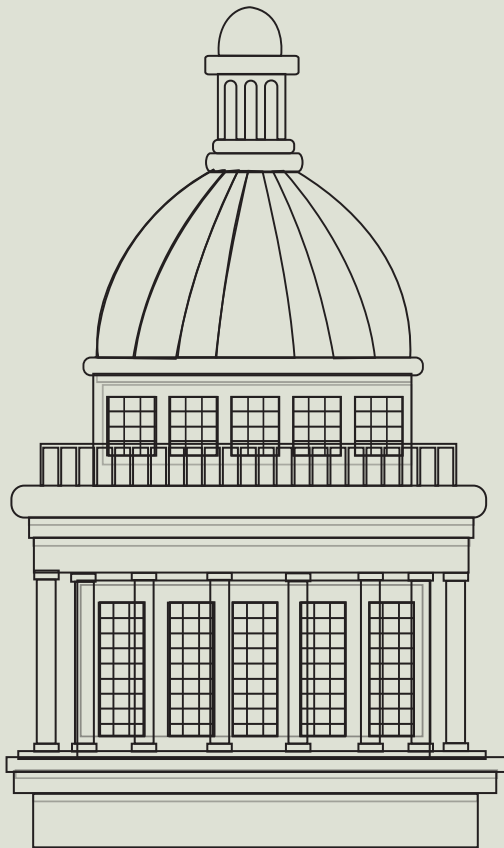
2012

January	February	March	April	May	June
S M T W T F S 1 2 3 4 5 6 7 8 9 10 11 12 13 14 15 16 17 18 19 20 21 22 23 24 25 26 27 28 29 30 31	S M T W T F S 1 2 3 4 5 6 7 8 9 10 11 12 13 14 15 16 17 18 19 20 21 22 23 24 25 26 27 28 29	S M T W T F S 1 2 3 4 5 6 7 8 9 10 11 12 13 14 15 16 17 18 19 20 21 22 23 24 25 26 27 28 29 30 31	S M T W T F S 1 2 3 4 5 6 7 8 9 10 11 12 13 14 15 16 17 18 19 20 21 22 23 24 25 26 27 28 29 30	S M T W T F S 1 2 3 4 5 6 7 8 9 10 11 12 13 14 15 16 17 18 19 20 21 22 23 24 25 26 27 28 29 30 31	S M T W T F S 1 2 3 4 5 6 7 8 9 10 11 12 13 14 15 16 17 18 19 20 21 22 23 24 25 26 27 28 29 30
July	August	September	October	November	December
S M T W T F S 1 2 3 4 5 6 7 8 9 10 11 12 13 14 15 16 17 18 19 20 21 22 23 24 25 26 27 28 29 30 31	S M T W T F S 1 2 3 4 5 6 7 8 9 10 11 12 13 14 15 16 17 18 19 20 21 22 23 24 25 26 27 28 29 30 31	S M T W T F S 1 2 3 4 5 6 7 8 9 10 11 12 13 14 15 16 17 18 19 20 21 22 23 24 25 26 27 28 29 30	S M T W T F S 1 2 3 4 5 6 7 8 9 10 11 12 13 14 15 16 17 18 19 20 21 22 23 24 25 26 27 28 29 30 31	S M T W T F S 1 2 3 4 5 6 7 8 9 10 11 12 13 14 15 16 17 18 19 20 21 22 23 24 25 26 27 28 29 30	S M T W T F S 1 2 3 4 5 6 7 8 9 10 11 12 13 14 15 16 17 18 19 20 21 22 23 24 25 26 27 28 29 30 31

April 17
Monthly Meeting
Image Evaluations
Judge Keith Sutter

The Placer Camera Club Celebrates 60 Years...

By Jim Cormier



Mike asked me to come up with a graphic to represent the 60th Anniversary of Club. I took some of the elements from the new patch I designed for the club a couple new elements such as the Court House dome. Years ago I entered contest to design a new logo for the Auburn Community Cable Public Access

the Placer Camera and incorporated and won a Channel 20.

My original inspiration for the dome was the small photo of the dome that Auburn Journal. This is before I got into photography so this was the best dome that I could come up with at the time.



appears on the likeness of the

I had fun creating the design to commemorate the 60th Anniversary of the Placer Camer Club. I hope that you all enjoy it. Sue, if you would like I can send you this image and you can add it to the club's web site.

Congratulations Placer Camera Club. We look forward to seeing the club around for another 60 years!!!

Bear Valley Wildflowers & New Wildflower Access Gate

By Mike Schumacher



New wildflower access gate...



Hello Fellow Photographers,

Bear Valley wildflowers are starting. A trip Friday the 30th found colors just starting to pop out. The field on Bear Valley Road by the Bear Valley Ranch is showing good color so far and should get better. Not many flowers by the side of the road yet. We are probably still a week or two out for full bloom depending on the weather.

The big news is 3 miles north of Bear Valley Ranch on Bear Valley Road just south of Brim Road. A wildflower access gate has been added. It is now ok to access this field. From Bear Valley Ranch it's 3 miles north on the second left or western jog. From the Brim Road turn off on Bear Valley Road it's a mile or so south on the first eastern jog of Bear Valley Road.



What judges look for in photos.

You're probably wondering why we pick one image over another; there actually are some simple rules of photography we look for in each photo. Common mistakes are:

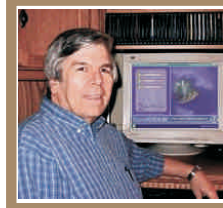
- (1) A photo out of focus, either the whole photo or part of it in an important location such as the bottom front of the print.
- (2) Too much "clutter" in the picture. We want our attention to go directly to the subject, not see a lot of competing, but not necessary, clutter around it.
- (3) Exposure - is the picture too light or too dark to easily see the subject.
- (4) Poor lighting, a "flat" image where rocks, subject, sky, etc., all blend together without different shadows, colors, etc. or the opposite where the sun might bleach out the lighter parts of the image, giving no texture to those areas.

There are other more subtle criteria we look for; placement of the subject, size of the subject within the image, etc., but the 4 listed above are the first and foremost most commonly seen, easily correctable problems that usually cause a photo to be eliminated.

For more specific guidelines, please feel free to drop in on any of our Placer Camera Club meetings and ask questions! We have meetings the third Tuesday of each month at 7:00 at the Beecher Room in the Library off Nevada Street. We have short programs, critique our own images, have "how-to" presentations and to end it all, great desserts!!



From Your Editor.



Placer Camera Club Members...

I wanted to thank everyone for all the support and positive comments on my first couple of newsletters.

It is due to the great articles and photos that you the members are submitting that is making this newsletter something we can all be proud of. Let's all keep up the great work.

Jim Cormier
Your Newsletter Editor.



**It's your camera. Learn how to use it.
Join the Placer Camera Club and
attend the monthly meetings.**

**There are members from all skill levels
who are willing to help you with your
photography questions.**

Join Today!



Sew on Placer Camera Club Logo Patches

If you haven't purchased your very own **Placer Camera Club Patches** they are still available for just **\$5.00** each. You can call **Jim Cormier at 530-637-4700** or send him a check made out to Square One Graphics and he will mail your patches out to you. The patches are a great way of identifying where you are from when you are out in public on a shoot.

Get yours today while they last!!!

Pg. 4

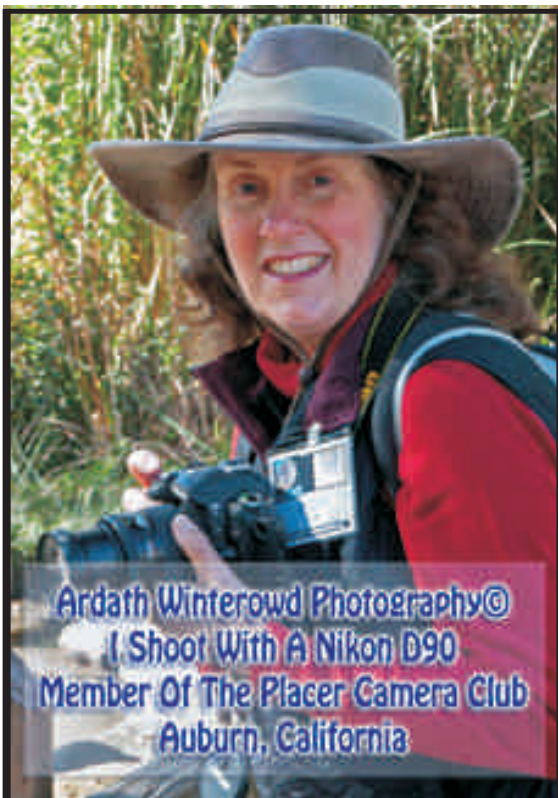
"Photography takes an instant out of time, altering life by holding it still."

What A Difference A Crop Makes!

By Ardath Winterowd



— MANZANAR —
WWII Japanese Internment Camp
<<http://en.wikipedia.org/wiki/Manzanar>>



What is Cropping?

Cropping refers to the removal of the outer parts of an image to improve framing, accentuate subject matter or change aspect ratio. Depending on the application, this may be performed on a physical photograph, artwork or film footage, or achieved digitally using image editing software. The term is common to the film, broadcasting, photographic, graphic design and printing industries.



Camera Club Snow Adventure-3-12

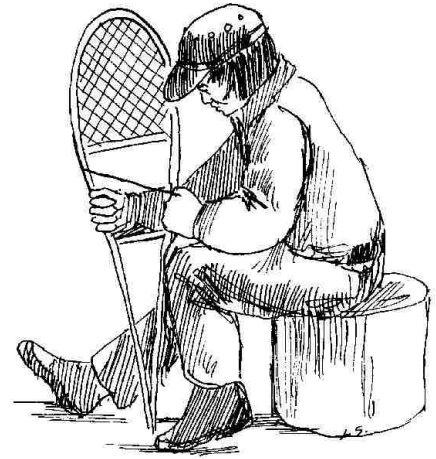
Organized by Jim L. White

A lackluster snow year did not stop some members of the Placer Camera Club from having a great photo day in the snow on Friday, March 23rd

Breakfast at Sweatpea's was followed by carpooling to our first snow adventure near Yuba Gap. The seldom used (in winter) road into Six Mile Valley caused some angsts to the group because the recently plowed road had been rained on and was covered with a sheet of ice. Very slow driving with a few shots of a lake used by pre-historic Indians was done by shooting from the road. Using the L.L. Bean Stableicers on their feet provided safe walking on the very icy road for some members.

On to the Eagle Lakes road where snowed in cabins and the snowy Yuba River filled our frames. Cisco was next and then to Rainbow Lodge, where many hiked along the road to photograph the river.

Our lunch spot at the Hampshire Rocks Campground pull-out also provided a snowshoe experience along the Yuba for some.



All in all, how can you not have a good time with good friends on a pleasant day taking pictures in the snow?



PCC Sierra Trip Donner Vista

Contributed by Bruce Gregory







ANNUAL TAILGATE CAMERA SWAP MEET

Sunday _ April 22nd, 2012

8AM-12PM

In our ACTION's parking lot.

- NO CHARGE TO BUY OR SELL
- If you plan to sell, bring your own table

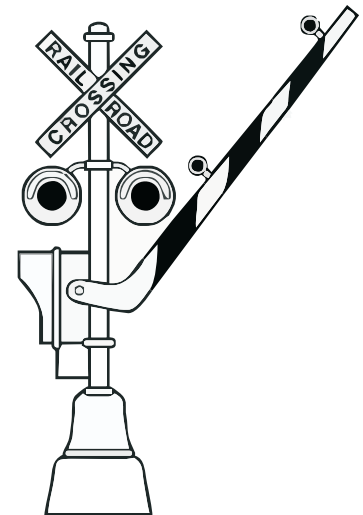
ACTION CAMERA



1000 Sunrise Ave. #48 Roseville, CA
916-786-2288



It was snowing so hard that the sky and air around us was a dark soupy grey. We were driving in the afternoon along the Dutch Flat-Gold Run road that parallels the railroad track near the old gold diggings. Thru the heavy snowfall I saw the bright headlight of a locomotive parked on the railroad siding. I hit the warning blinker lights and parked along the edge of the road, grabbed the Nikon and trudged thru the foot of new snow up the embankment to the railroad track. The train's black engine with its headlight gleaming thru the heavy snowfall looked like a monster waiting to pounce. I could hear the hiss and shriek of the air pressure valves on the engine as they released. I stood next to the mainline rails and zoomed thru the Nikon viewfinder to frame the train's engine with the curve of the rails in the foreground. Was the shutter speed fast enough? The f stop small enough? I peered thru the viewfinder and fired.



With my parka hood up I was chimping at the screen on the back of the Nikon when I thought I heard a soft, almost husky “wamp” from behind me. I turned and was almost blinded by the engine headlamp of Amtrak 59 silently coming right at me with a rush. Instantly I threw the viewfinder to my face and pushed the high speed firing button down. Seven frames and maybe eight seconds later I looked over my right shoulder and saw the wheels of the engine passing less than three feet away. I had forgotten to jump out of the way! I remember my mouth being so dry I could not swallow. I jumped to the left and stumbled down the snowy bank to my car. I fell into the car covered with fresh snow and was exhausted. Not my time to die.



If you're thinking of going out to photo and the weatherman says it's going to be "Mostly Cloudy", "Clouds & Sun", or "A Storm Moving In, or Out" consider yourself lucky that you've planned to photo that day, especially if you've planned to go over to the Coast Range, into the Valley, or somewhere in the Foothills. In the more open areas you may have a chance to catch the clouds as they gather & see the progress of the storm.

The attached photos were taken on trips to Bear Valley Rd, Leesville Rd, or coming & going over there. West of Williams on I5 Highway 20 makes two 90 degree left turns. If you go straight at the second jog you're on King Rd. King Rd runs into Leesville Rd at a ranch where the barn in the pictures is located. If you stay on Highway 20 another few miles Leesville intersects with Hwy 20 just before you enter the hills. If you turn right at the intersection you're on Leesville Rd, it may be unmarked. If you turned left at that same intersection you'd be on Walnut Dr, different named roads on opposite sides of Hwy 20. Leesville Rd runs from there to the top of Bear Valley.

If you continue about 16 miles west of Williams on Hwy 20 Bear Valley Rd is on the right just past where Highway 16 intersects. Turn right & stay on the main road and you'll end up in Bear Valley. At the North end of the Valley Leesville Rd intersects and can take you back to Hwy 20. Bear Valley road is graded dirt & in decent shape for careful driving in

passenger car. Leesville Rd is paved, patched, narrow, steep, & winding. Perfect road for going slow & enjoying the sometimes spectacular scenery. King road is a combination of paved & unpaved, but like Bear Valley Rd, it's generally in good shape and passable in a regular vehicle, leave your low-slung Porsche home.

As you can see by my attached photos I prefer monochrome for this type of image, and more specifically infrared from a converted camera. I did include a conventional color image. If you want to try monochrome you can do it in a couple of ways. In my conventional camera's Retouch Menu I can choose to duplicate an image in monochrome, or I can set the camera for monochrome capture. There are various filter effects on certain cameras.

In the Adobe post processing programs duplicating an image & rendering it to Black & White is a one click operation, additionally there are various filters & pre-sets in Lightroom's Developing Module you can apply to the image for different looks. I'm sure Elements & Photoshop have their versions too. Have some fun.. check out the world of monochrome.

Next time the weatherman predicts changing weather conditions grab your camera & look for some spectacular clouds & thunderheads.

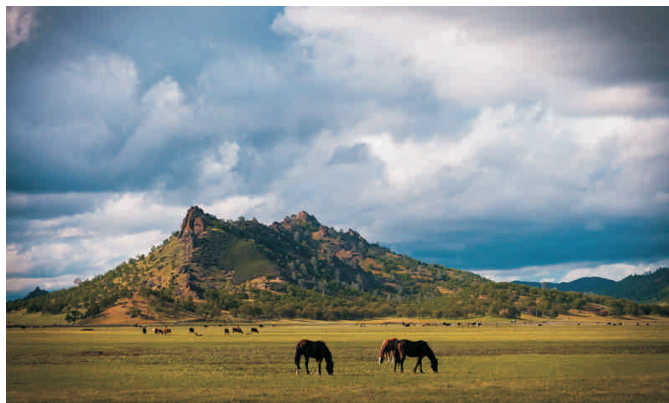
When planning a trip I frequently consult www.accuweather.com before a trip to assess the weather conditions. You can get a prediction 15 days out on the site. If you click "more info" under the date it expends the information. If you click "hour by hour" you'll get an hour by hour prediction, but only for the immediate few days, if you click there too far out It will ask you to pay for premium service. You can get it for free a day or two from the date. The site works internationally also. Just put a nearby city or town in the search box at the top of the home page.

Bruce Gregory

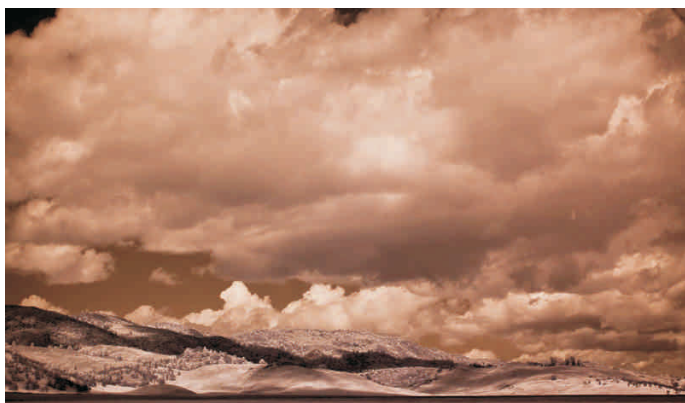




Barn on Leesville Rd.



Bear Valley Buttes.



Bear Valley Clouds.



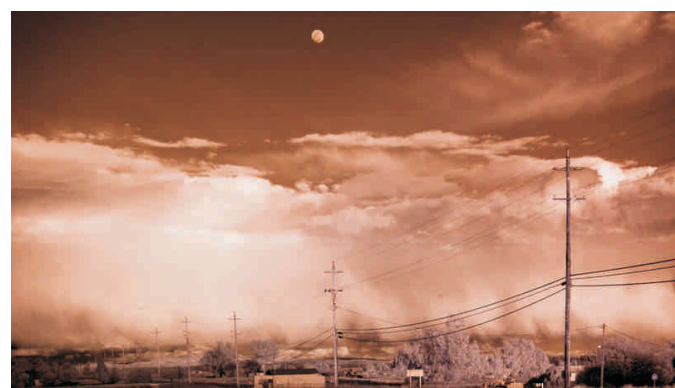
Central Valley Edge 2012.



Central Valley Edge 2 2012.



Leesville Valley.



Moonrise over telephone poles.



Soaring Fantasy. _Highway 20 and Spring Valley Rd. Pg. 12

Photographers Trip On The Skunk Train

Submitted By Barry Walton

Hello PCC Members,

There is a special "photographers" trip on the Skunk Train scheduled for:

Date: June 10th (Sunday morning).

Ft. Bragg – Mendocino County

Cost \$50 each (includes breakfast & lunch)

Stops at special points for photographers to get off...train backs up and comes forward.

Will make additional stops as requested. Bob indicates that they can add additional cars for more folks who sign up.

Checks are due in a couple of weeks. Check with Bob first to be sure he knows you are sending money.

I met Bob at **Shooting the West**.

Contact:

Bob Gardner

bgardner@gotsky.com

www.gotsky.com

Phone: 1-707-895-2249

Checks mailed to:

PO Box 851

Philo, CA 95466



I found this photo of Barry on the Internet and thought I would include it..

Crispen and I are planning to go and we've told a couple of others. Join us...

PCC Members Websites

We are starting a list of Placer Camera Club member websites. I am gathering a list of member websites and will email the list out as soon as it is ready. When the list is complete we will link to member websites from the Placer Camera Club website. If you would like your website or blog to be included send the website to me at radioman@sebastiancorp.net If you can, put a link from your website to the Placer Camera Club website. This is what I have so far:

Jim Cormier

<http://www.squareonegraphics.com/>

Jim Bennett

<http://www.youtube.com/user/lookydude>

Bill Stenwick

<http://bill-stenwick.smugmug.com/>

Sande Parker

<http://windsongphotographytoday.com>

David Keyes

<http://davekeyesphotography.com>

Robbin Maloney

<http://robbinmaloneyphotography.com>

Mike Schumacher

<http://morningstarimages.com>

Truman Holtzclaw

<http://www.abiphotos.com/>

Walt Carnahan

<http://www.sierrafoothillsaudubon.com/>

Ardath Winterowd

<http://flic.kr/s/aHsjyv86dM>

Ron Parker

<http://www.photographybyronparker.com/>

Rod Bonser

<http://tinyurl.com/rods-photo-sets>

Sue Barthelow

<http://www.suebarthelow.com/> <http://www.suebarthelowimages.com/>



Board Members

President	Mike Schumacher
1st Vice Pres.	Richard Myren
2nd Vice Pres.	Howard Godfrey
Secretary	Dick Bosworth & Liz Staats
Treasurer	Judy Hooper

Committees

Webpage & Publicity

Sue Barthelow

Education Committee

Howard Godfrey

Jerry Berry

Lee Whiting

Equipment

Judy Hooper

Richard Myren

Judge Selection

Bruce Gregory

Howard Godfrey

Mike Schumacher

Image Evaluation Data

Judy Hooper

Tony Middleton

Placer Color Newsletter Editor

Jim Cormier

Refreshments

Bonnie Godfrey

Kristi Middleton

Greeters & Badges

Jim Bennett



Visit our website
www.placercameraclub.org

Placer Color Newsletter Editor
Jim Cormier
530-637-4700
jim@squareonegraphics.com

We have a great selection of
Tutorials on our website...

Huey Monitor Calibration
The club has a Huey Monitor Calibration System
for use by the members.

TO CHECK IT OUT
Contact Judy Hooper • 530-888-8308

Members who contributed articles
and web site information for this
months newsletter.

Mike Schumacher
Ardath Winterowd
Jim & Shirley White
Bruce Gregory
Judy Hooper
Barry & Crispin Walton

